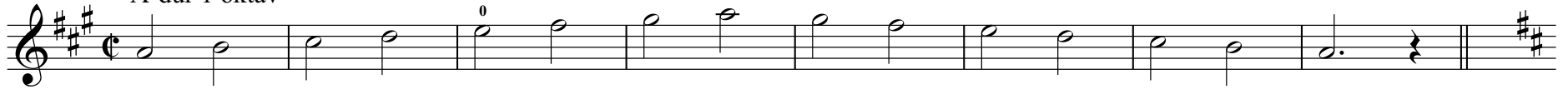


Skalor

A-dur 1 oktav



D-dur 1 oktav



G-dur 2 oktaver



D-moll (melodisk) upp till Bess



Bess-dur 2 oktaver



A-moll (melodisk) 2 oktaver



A-dur 2 oktaver

Musical notation for the A major scale (A-dur) spanning two octaves. The key signature has three sharps (F#, C#, G#). The scale is written on a treble clef staff. Fingerings are indicated by the number 4 above the notes: A4, B4, C#5, D5, E5, F#5, G#5, A5, B5, C#6, D6, E6, F#6, G#6, A6. The piece concludes with a double bar line and a key signature change to B minor.

G-moll (melodisk) 2 oktaver

Musical notation for the G minor scale (G-moll) spanning two octaves. The key signature has two flats (Bb, Eb). The scale is written on a treble clef staff. Fingerings are indicated by 0 (open string) and 4: G4, Ab4, Bb4, C5, D5, Eb5, F5, G5, Ab5, Bb5, C6, D6, Eb6, F6, G6. The piece concludes with a double bar line and a key signature change to A major.

D-dur 2 oktaver

Musical notation for the D major scale (D-dur) spanning two octaves. The key signature has two sharps (F#, C#). The scale is written on a treble clef staff. Fingerings are indicated by 1, 4, and 2: D4, E4, F#4, G4, A4, B4, C#5, D5, E5, F#5, G5, A5, B5, C#6, D6. The piece concludes with a double bar line and a key signature change to B minor.

D-moll (melodisk) 2 oktaver

Musical notation for the D minor scale (D-moll) spanning two octaves. The key signature has two flats (Bb, Eb). The scale is written on a treble clef staff. Fingerings are indicated by 1 and 3: D4, Eb4, F4, G4, Ab4, Bb4, C5, D5, Eb5, F5, G5, Ab5, Bb5, C6, D6. The piece concludes with a double bar line and a key signature change to A major.

G-dur 3 oktaver

Musical notation for the G major scale (G-dur) spanning three octaves. The key signature has one sharp (F#). The scale is written on a treble clef staff. Fingerings are indicated by 4, 1, and 1: G4, A4, B4, C5, D5, E5, F#5, G5, A5, B5, C6, D6, E6, F#6, G6, A6, B6, C7, D7, E7, F#7, G7. The piece concludes with a double bar line.

Musical notation for the G major scale (G-dur) spanning three octaves. The key signature has one sharp (F#). The scale is written on a treble clef staff. Fingerings are indicated by 4, 4, and 4: G4, A4, B4, C5, D5, E5, F#5, G5, A5, B5, C6, D6, E6, F#6, G6, A6, B6, C7, D7, E7, F#7, G7. The piece concludes with a double bar line.